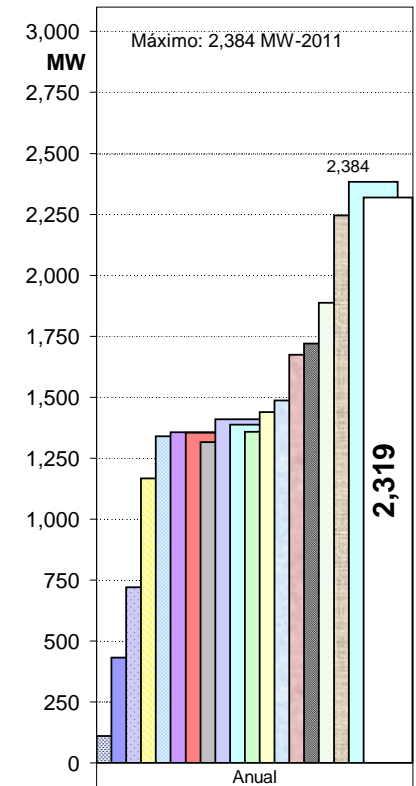
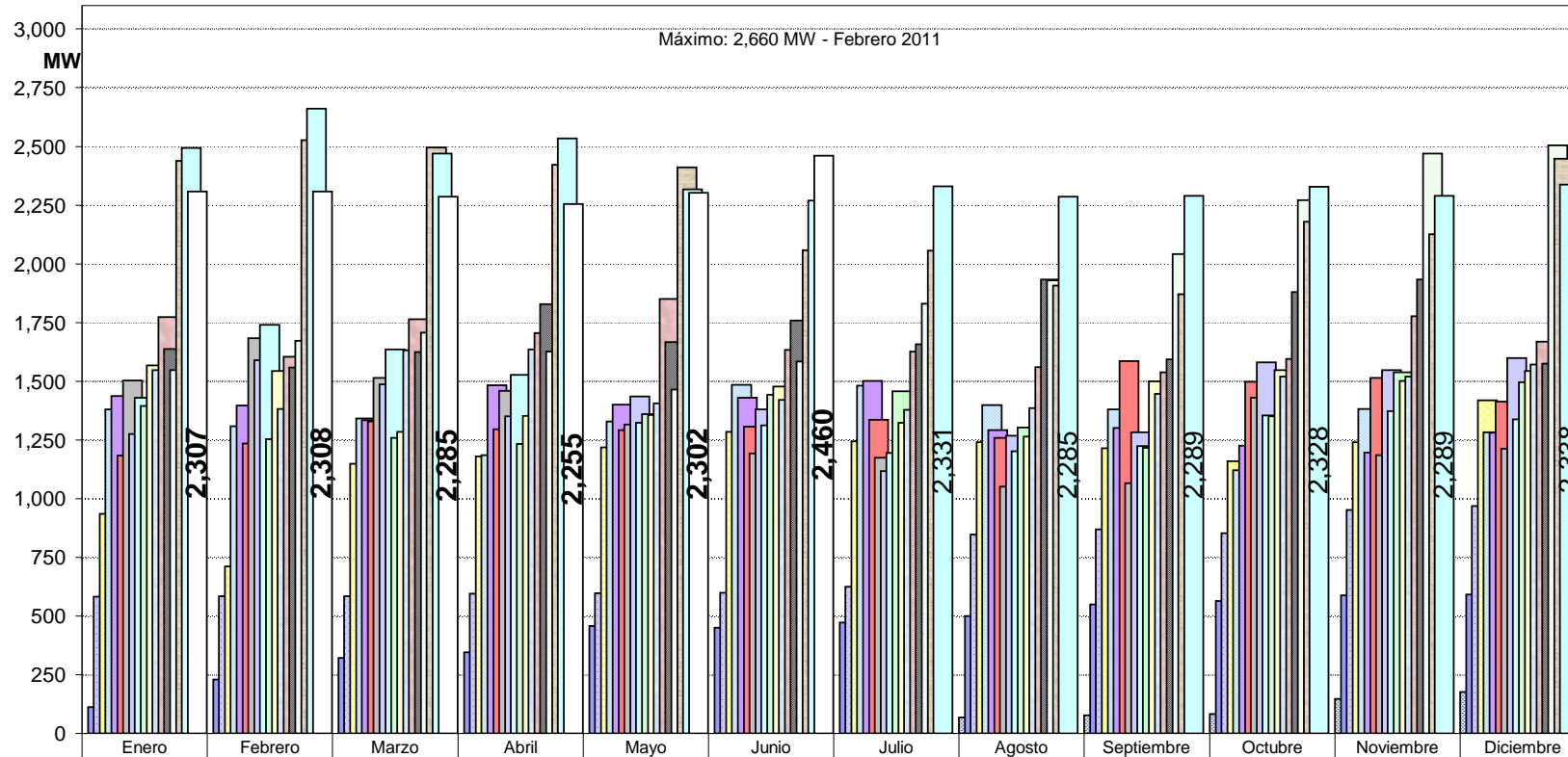


POTENCIA MEDIA MENSUAL DE YACYRETÁ DESDE PUESTA EN FUNCIONAMIENTO PRIMERA UNIDAD

MENSUALES

ANUALES



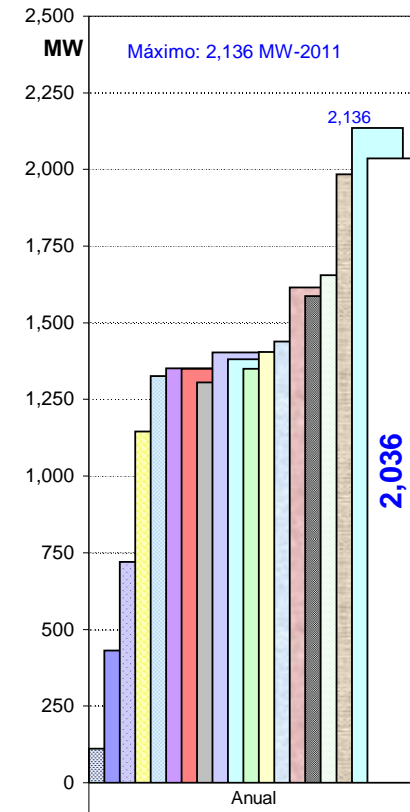
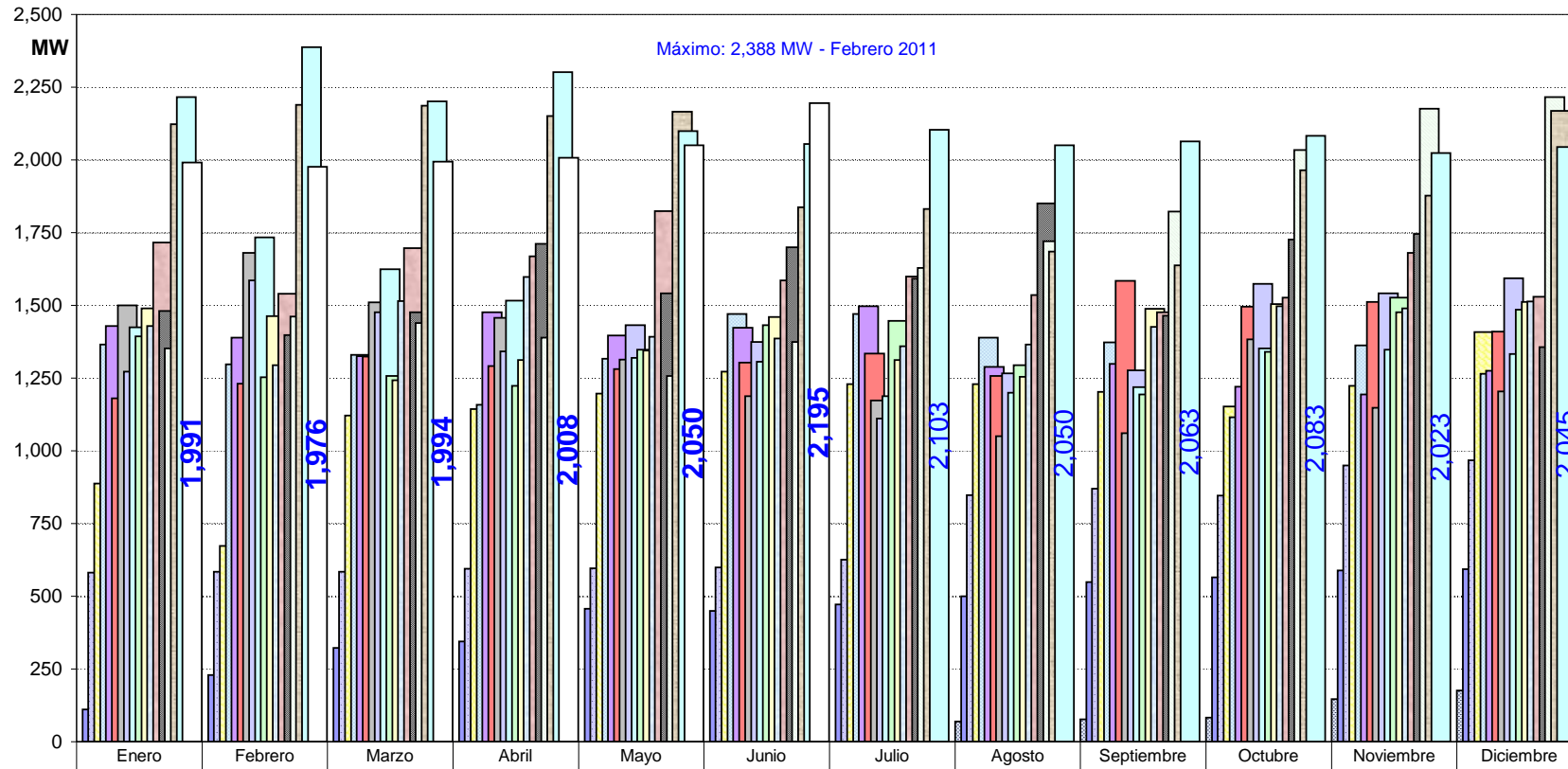
1994								69	78	83	146	177
1995	111	229	322	345	457	449	473	501	549	564	589	593
1996	582	584	584	595	597	599	625	847	869	853	951	968
1997	935	712	1,148	1,180	1,218	1,284	1,243	1,240	1,215	1,160	1,240	1,418
1998	1,379	1,308	1,341	1,185	1,329	1,486	1,481	1,398	1,380	1,121	1,382	1,283
1999	1,437	1,397	1,335	1,483	1,401	1,429	1,501	1,291	1,301	1,225	1,197	1,280
2000	1,184	1,234	1,329	1,295	1,291	1,306	1,336	1,259	1,586	1,497	1,514	1,414
2001	1,503	1,683	1,514	1,459	1,316	1,193	1,175	1,051	1,067	1,430	1,185	1,213
2002	1,275	1,590	1,487	1,351	1,436	1,379	1,118	1,269	1,283	1,581	1,547	1,598
2003	1,429	1,741	1,635	1,527	1,323	1,312	1,194	1,202	1,223	1,354	1,372	1,339
2004	1,395	1,254	1,258	1,233	1,361	1,442	1,457	1,304	1,216	1,350	1,538	1,496
2005	1,568	1,544	1,285	1,353	1,355	1,478	1,323	1,264	1,500	1,547	1,500	1,543
2006	1,547	1,382	1,632	1,636	1,406	1,421	1,379	1,386	1,446	1,519	1,519	1,571
2007	1,773	1,604	1,765	1,705	1,851	1,633	1,626	1,560	1,537	1,594	1,777	1,669
2008	1,638	1,557	1,625	1,829	1,667	1,759	1,658	1,933	1,593	1,881	1,934	1,574
2009	1,547	1,672	1,707	1,626	1,465	1,584	1,830	1,930	2,042	2,271	2,469	2,505
2010	2,439	2,527	2,495	2,422	2,411	2,058	2,057	1,907	1,870	2,179	2,125	2,447
2011	2,494	2,660	2,470	2,535	2,317	2,269	2,331	2,285	2,289	2,328	2,289	2,338
2012	2,307	2,308	2,285	2,255	2,302	2,460						

1994	111
1995	432
1996	721
1997	1,166
1998	1,339
1999	1,356
2000	1,354
2001	1,316
2002	1,409
2003	1,388
2004	1,359
2005	1,438
2006	1,487
2007	1,674
2008	1,721
2009	1,887
2010	2,245
2011	2,384
2012	2,319

POTENCIA MEDIA DE YACYRETÁ AL SADI DESDE PUESTA EN FUNCIONAMIENTO PRIMERA UNIDAD

MENSUALES

ANUALES

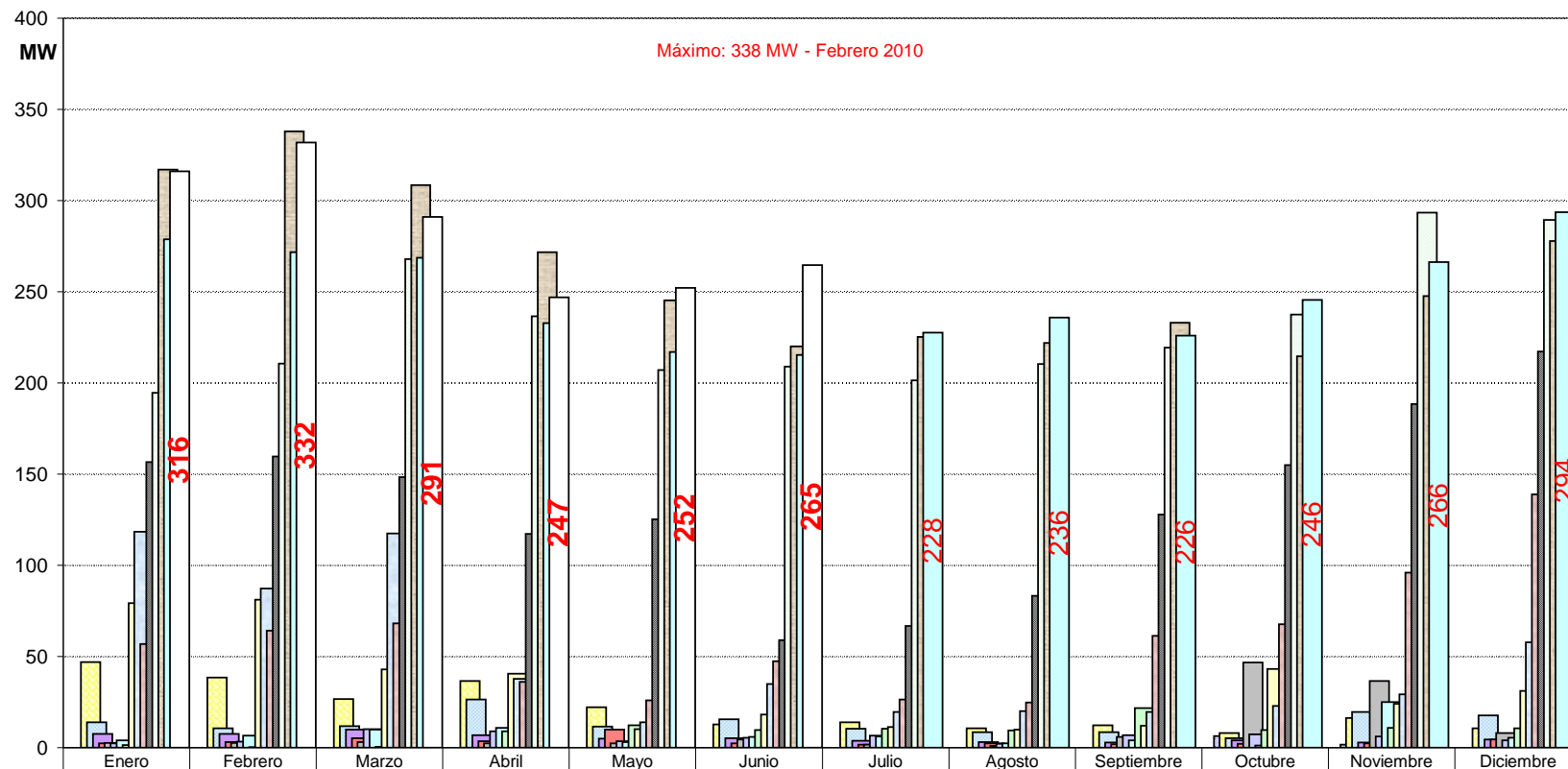


	Enero	Febrero	Marzo	Abril	Mayo	Junio	Julio	Agosto	Septiembre	Octubre	Noviembre	Diciembre
1994								69	78	83	146	177
1995	111	229	322	345	457	449	473	501	549	564	589	593
1996	582	584	584	595	597	599	625	847	869	846	949	968
1997	888	674	1,121	1,143	1,196	1,272	1,229	1,230	1,203	1,152	1,224	1,408
1998	1,365	1,298	1,330	1,158	1,317	1,470	1,471	1,389	1,372	1,116	1,362	1,265
1999	1,429	1,390	1,325	1,476	1,396	1,424	1,497	1,288	1,299	1,221	1,194	1,276
2000	1,181	1,231	1,324	1,292	1,281	1,304	1,334	1,257	1,584	1,495	1,511	1,410
2001	1,500	1,680	1,511	1,457	1,314	1,189	1,173	1,050	1,061	1,383	1,148	1,205
2002	1,273	1,586	1,477	1,342	1,432	1,374	1,111	1,267	1,276	1,574	1,541	1,594
2003	1,425	1,734	1,625	1,516	1,320	1,306	1,188	1,200	1,219	1,353	1,347	1,333
2004	1,394	1,253	1,258	1,224	1,348	1,433	1,447	1,294	1,194	1,341	1,527	1,485
2005	1,489	1,463	1,242	1,312	1,345	1,460	1,312	1,254	1,488	1,504	1,476	1,512
2006	1,428	1,295	1,514	1,598	1,392	1,386	1,359	1,366	1,426	1,496	1,490	1,513
2007	1,716	1,540	1,697	1,668	1,825	1,586	1,600	1,535	1,476	1,526	1,681	1,530
2008	1,481	1,398	1,477	1,712	1,542	1,700	1,592	1,850	1,465	1,726	1,745	1,357
2009	1,352	1,461	1,439	1,389	1,258	1,375	1,629	1,720	1,823	2,034	2,176	2,216
2010	2,122	2,189	2,187	2,151	2,166	1,838	1,832	1,685	1,637	1,965	1,878	2,169
2011	2,215	2,388	2,201	2,302	2,100	2,054	2,103	2,050	2,063	2,083	2,023	2,045
2012	1,991	1,976	1,994	2,008	2,050	2,195						

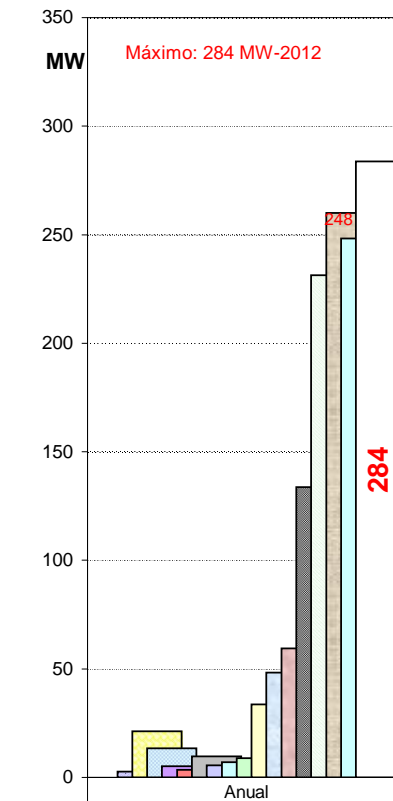
	Anual
1994	111
1995	432
1996	720
1997	1,145
1998	1,326
1999	1,351
2000	1,350
2001	1,306
2002	1,404
2003	1,380
2004	1,350
2005	1,405
2006	1,439
2007	1,615
2008	1,587
2009	1,656
2010	1,985
2011	2,136
2012	2,036

POTENCIA MEDIA DE YACYRETÁ AL SINP DESDE PUESTA EN FUNCIONAMIENTO PRIMERA UNIDAD

MENSUALES



ANUALES



	Enero	Febrero	Marzo	Abril	Mayo	Junio	Julio	Agosto	Septiembre	Octubre	Noviembre	Diciembre
1994												
1995												
1996										6	2	0
1997	47	38	27	36	22	13	14	11	12	8	16	11
1998	14	11	12	26	12	16	10	9	8	5	20	18
1999	8	8	10	7	5	5	4	3	3	4	3	4
2000	2	3	5	4	10	2	2	2	2	2	2	4
2001	3	3	3	2	2	4	2	1	6	47	36	8
2002	2	3	10	9	4	5	7	2	7	7	6	4
2003	4	7	10	11	3	6	6	2	4	1	25	5
2004	1	0	1	9	12	10	10	10	22	10	11	11
2005	79	81	43	41	10	18	11	10	12	43	24	31
2006	118	87	118	38	14	35	20	20	20	23	29	58
2007	57	64	68	36	26	47	26	25	61	68	96	139
2008	157	160	148	117	125	59	67	83	128	155	188	217
2009	195	211	268	237	207	209	201	210	219	237	293	289
2010	317	338	309	272	245	220	225	222	233	215	248	278
2011	279	272	269	233	217	215	228	236	226	246	266	294
2012	316	332	291	247	252	265						

	Anual
1994	0
1995	0
1996	3
1997	21
1998	13
1999	5
2000	3
2001	10
2002	6
2003	7
2004	9
2005	34
2006	48
2007	59
2008	134
2009	231
2010	260
2011	248
2012	284