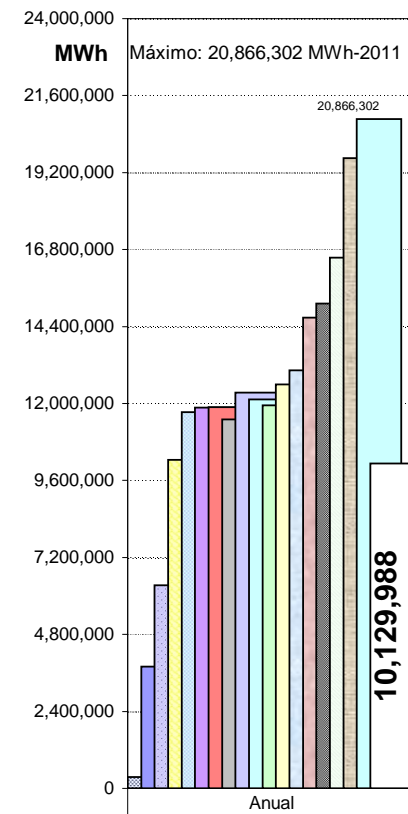
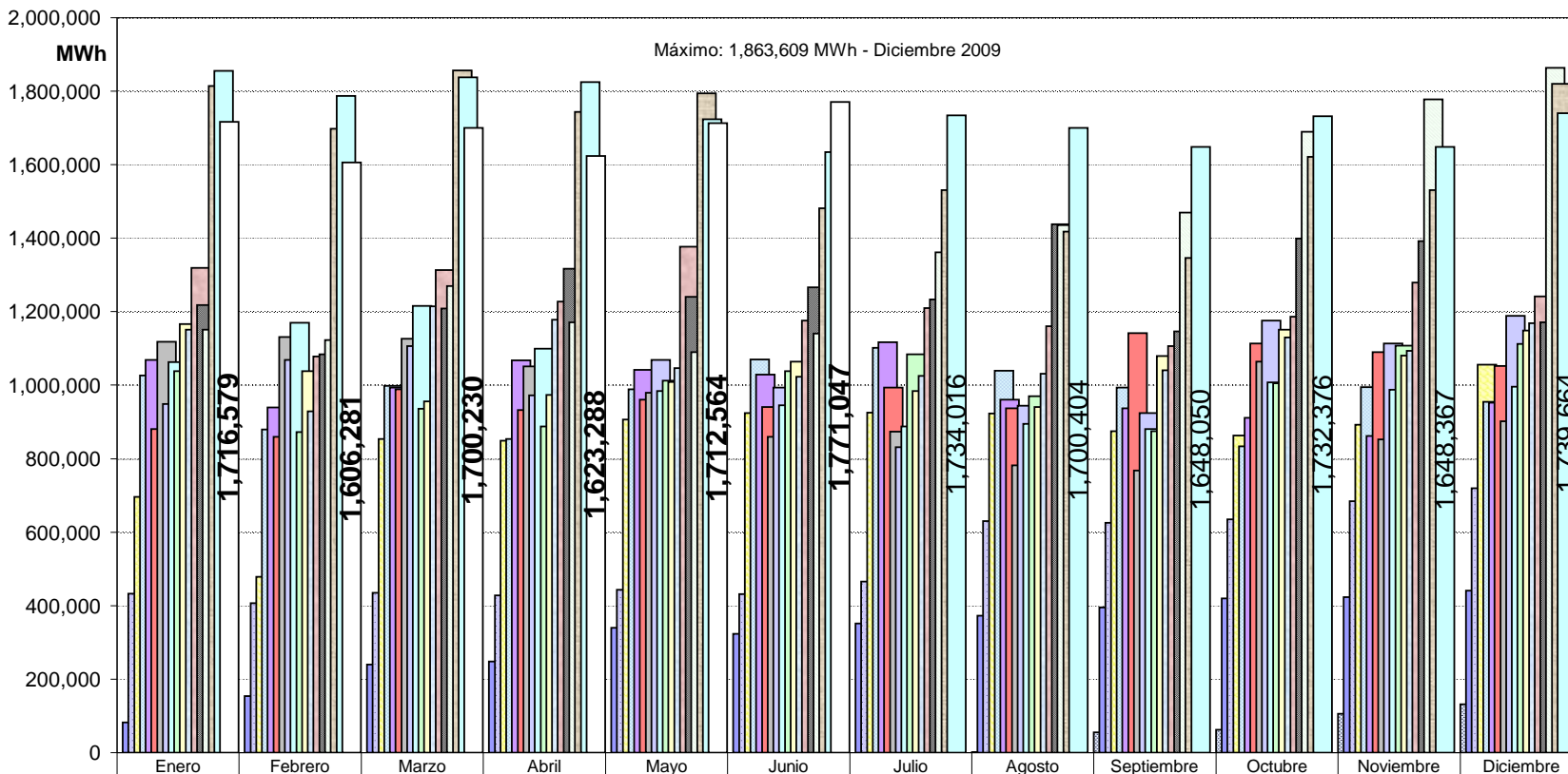


ENERGIA DE YACYRETÁ DESDE PUESTA EN FUNCIONAMIENTO PRIMERA UNIDAD

MENSUALES

ANUALES



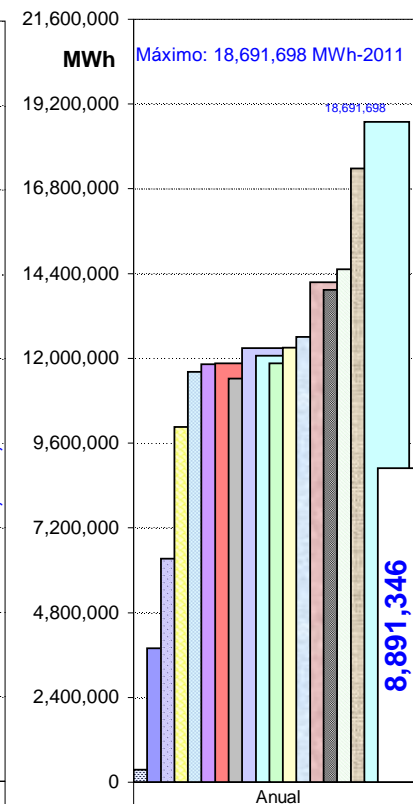
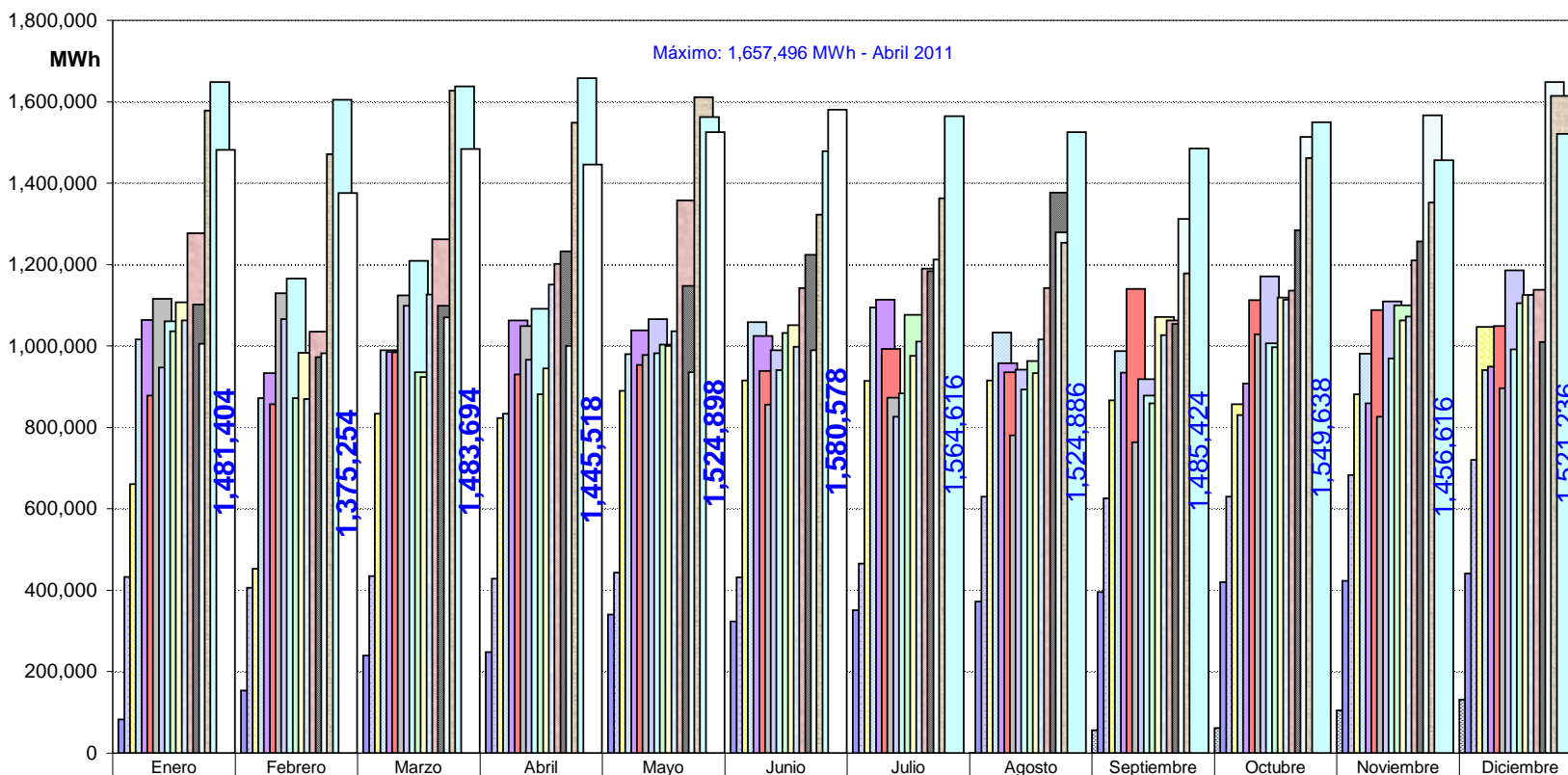
	Enero	Febrero	Marzo	Abril	Mayo	Junio	Julio	Agosto	Septiembre	Octubre	Noviembre	Diciembre
1994								826	55,808	62,043	105,254	131,430
1995	82,725	153,902	239,598	248,286	340,198	323,527	351,549	372,443	395,580	419,897	423,745	440,895
1996	432,826	406,332	434,687	428,430	443,845	431,606	465,285	630,482	625,808	634,449	684,778	719,896
1997	695,640	478,448	853,970	849,365	906,280	924,734	924,942	922,860	874,894	863,159	892,706	1,055,293
1998	1,026,100	879,220	997,980	853,028	988,412	1,069,650	1,102,135	1,039,960	993,949	833,916	994,867	954,498
1999	1,069,093	938,959	993,182	1,067,994	1,042,262	1,028,792	1,116,528	960,502	936,925	911,281	861,553	952,374
2000	880,531	859,110	988,559	932,685	960,706	940,476	993,673	936,847	1,142,040	1,114,048	1,089,727	1,051,954
2001	1,118,135	1,130,985	1,126,356	1,050,735	979,352	858,912	873,994	781,922	767,967	1,063,843	852,959	902,334
2002	948,700	1,068,235	1,106,161	972,585	1,068,197	993,113	831,764	943,785	923,709	1,176,318	1,113,871	1,188,800
2003	1,063,206	1,169,984	1,216,206	1,099,128	984,325	944,839	888,297	894,256	880,796	1,007,082	987,886	995,907
2004	1,037,821	872,476	936,063	887,434	1,012,217	1,038,561	1,084,287	969,912	875,290	1,004,754	1,107,266	1,112,709
2005	1,166,807	1,037,814	956,206	974,060	1,008,316	1,064,078	984,308	940,556	1,079,932	1,150,952	1,080,280	1,148,158
2006	1,150,759	928,595	1,214,148	1,177,880	1,046,358	1,023,019	1,025,792	1,031,060	1,040,776	1,130,260	1,093,872	1,168,536
2007	1,319,283	1,077,831	1,313,143	1,227,323	1,376,794	1,176,103	1,209,634	1,160,662	1,106,892	1,186,129	1,279,204	1,241,673
2008	1,218,521	1,083,946	1,209,133	1,317,078	1,240,590	1,266,174	1,233,797	1,438,480	1,146,781	1,399,238	1,392,275	1,171,158
2009	1,150,738	1,123,298	1,269,799	1,170,735	1,090,187	1,140,370	1,361,786	1,435,938	1,470,246	1,689,822	1,777,960	1,863,609
2010	1,814,730	1,698,207	1,856,386	1,744,126	1,793,947	1,481,551	1,530,434	1,418,559	1,346,356	1,621,476	1,530,280	1,820,630
2011	1,855,668	1,787,512	1,837,484	1,825,153	1,723,623	1,633,986	1,734,016	1,700,404	1,648,050	1,732,376	1,648,367	1,739,664
2012	1,716,579	1,606,281	1,700,230	1,623,288	1,712,564	1,771,047						

	Anual
1994	355,361
1995	3,792,345
1996	6,338,424
1997	10,242,292
1998	11,733,715
1999	11,879,445
2000	11,890,356
2001	11,507,494
2002	12,335,237
2003	12,131,912
2004	11,938,790
2005	12,591,468
2006	13,031,055
2007	14,674,671
2008	15,117,172
2009	16,544,487
2010	19,656,681
2011	20,866,302
2012	10,129,988

ENERGIA DE YACYRETÁ AL SADI DESDE PUESTA EN FUNCIONAMIENTO PRIMERA UNIDAD

MENSUALES

ANUALES



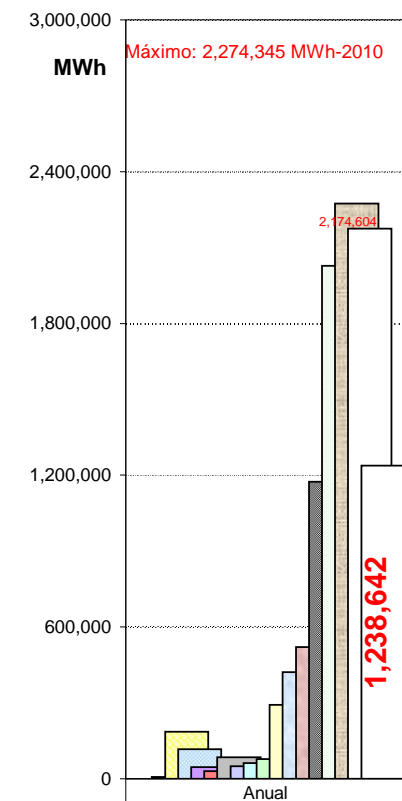
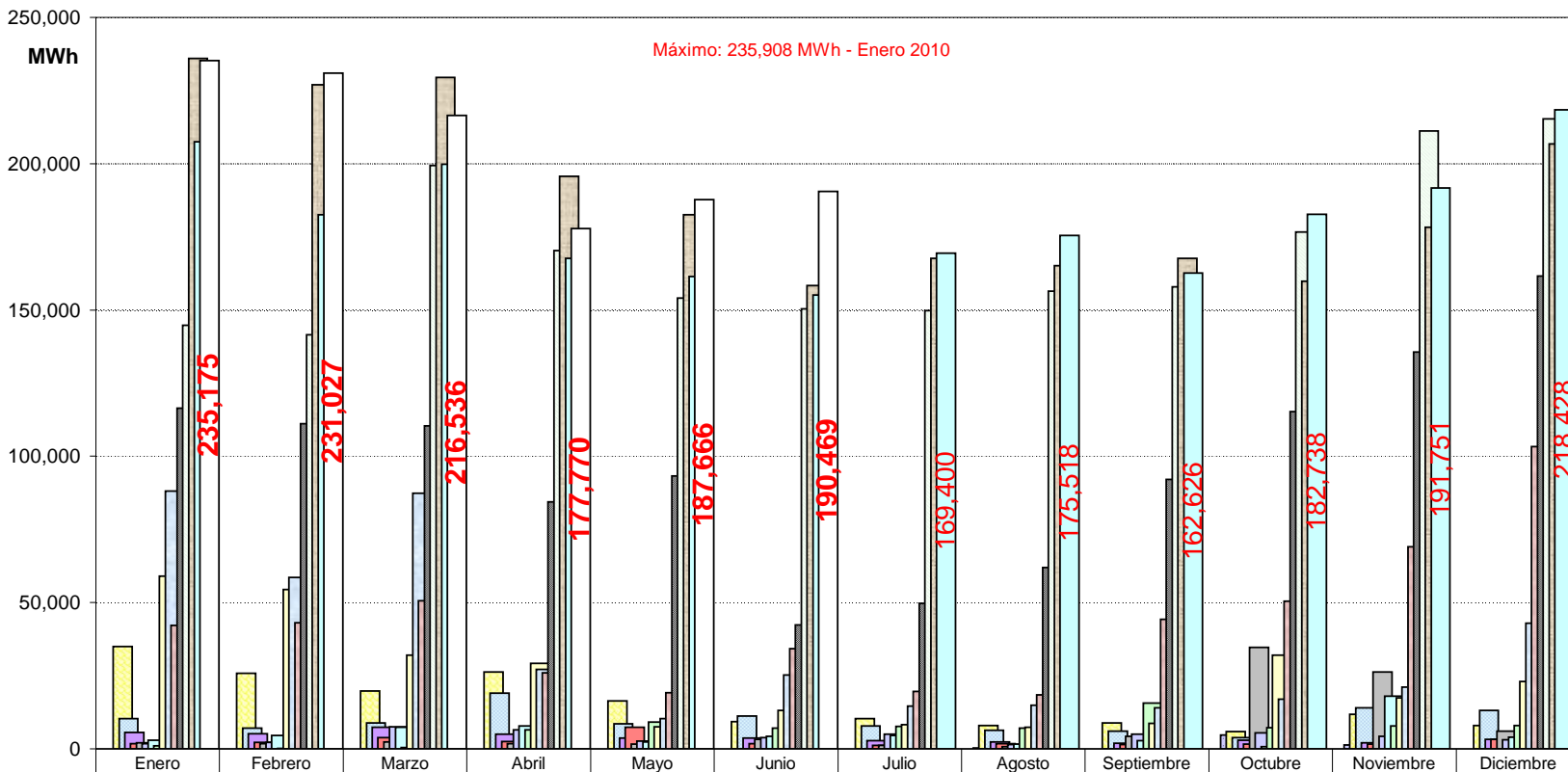
	Enero	Febrero	Marzo	Abril	Mayo	Junio	Julio	Agosto	Septiembre	Octubre	Noviembre	Diciembre
1994								826	55,808	62,043	105,254	131,430
1995	82,725	153,902	239,598	248,286	340,198	323,527	351,549	372,443	395,580	419,897	423,745	440,895
1996	432,826	406,332	434,687	428,430	443,845	431,606	465,285	630,198	625,808	629,717	683,510	719,896
1997	660,696	452,618	834,124	823,118	889,830	915,508	914,578	914,902	866,096	857,272	880,936	1,047,310
1998	1,015,768	872,082	989,198	833,977	979,854	1,058,430	1,094,334	1,033,611	987,876	830,070	980,785	941,325
1999	1,063,419	933,865	985,801	1,063,012	1,038,626	1,025,109	1,113,769	958,191	934,967	908,320	859,502	949,058
2000	878,745	856,894	984,762	930,146	953,339	938,778	992,504	935,052	1,140,632	1,112,416	1,088,054	1,048,706
2001	1,116,134	1,129,266	1,123,998	1,049,006	977,673	855,728	872,830	781,196	763,664	1,029,174	826,682	896,324
2002	946,880	1,066,034	1,098,658	966,150	1,065,520	989,240	826,812	942,290	918,742	1,170,798	1,109,540	1,185,754
2003	1,060,250	1,165,468	1,208,878	1,091,350	981,959	940,623	883,650	892,576	877,942	1,006,273	969,883	991,948
2004	1,036,812	872,263	935,653	880,993	1,003,010	1,031,528	1,076,608	962,833	859,680	997,491	1,099,509	1,104,731
2005	1,107,832	983,320	924,204	944,862	1,000,744	1,050,964	975,970	933,130	1,071,282	1,118,896	1,062,880	1,125,068
2006	1,062,716	869,950	1,126,726	1,150,710	1,035,996	997,832	1,011,226	1,016,202	1,026,714	1,113,272	1,072,782	1,125,574
2007	1,277,008	1,034,766	1,262,488	1,201,294	1,357,562	1,141,904	1,190,040	1,142,218	1,062,676	1,135,684	1,210,150	1,138,324
2008	1,102,080	972,838	1,098,754	1,232,714	1,147,350	1,223,762	1,184,080	1,376,542	1,054,674	1,284,036	1,256,608	1,009,566
2009	1,005,924	981,834	1,070,414	1,000,388	936,052	989,972	1,212,000	1,279,492	1,312,352	1,513,176	1,566,736	1,648,332
2010	1,578,822	1,471,162	1,626,838	1,548,502	1,611,396	1,323,134	1,362,830	1,253,464	1,178,654	1,461,716	1,351,964	1,613,854
2011	1,648,188	1,604,916	1,637,610	1,657,496	1,562,166	1,478,906	1,564,616	1,524,886	1,485,424	1,549,638	1,456,616	1,521,236
2012	1,481,404	1,375,254	1,483,694	1,445,518	1,524,898	1,580,578						

	Annual
1994	355,361
1995	3,792,345
1996	6,332,139
1997	10,056,989
1998	11,617,309
1999	11,833,638
2000	11,860,029
2001	11,421,675
2002	12,286,418
2003	12,070,800
2004	11,861,111
2005	12,299,152
2006	12,609,700
2007	14,154,114
2008	13,943,004
2009	14,516,672
2010	17,382,336
2011	18,691,698
2012	8,891,346

ENERGIA DE YACYRETÁ AL SINP DESDE PUESTA EN FUNCIONAMIENTO PRIMERA UNIDAD

MENSUALES

ANUALES



	Enero	Febrero	Marzo	Abril	Mayo	Junio	Julio	Agosto	Septiembre	Octubre	Noviembre	Diciembre
1994	0	0	0	0	0	0	0	0	0	0	0	0
1995	0	0	0	0	0	0	0	0	0	0	0	0
1996	0	0	0	0	0	0	0	284	0	4,732	1,269	0
1997	34,944	25,830	19,846	26,247	16,450	9,226	10,364	7,958	8,798	5,887	11,770	7,983
1998	10,332	7,139	8,782	19,051	8,558	11,220	7,801	6,350	6,073	3,846	14,082	13,173
1999	5,674	5,094	7,381	4,983	3,636	3,683	2,759	2,311	1,958	2,961	2,051	3,316
2000	1,786	2,216	3,797	2,539	7,367	1,698	1,169	1,795	1,408	1,632	1,673	3,248
2001	2,001	1,719	2,358	1,729	1,679	3,184	1,164	726	4,303	34,669	26,277	6,011
2002	1,820	2,201	7,503	6,435	2,677	3,873	4,952	1,495	4,967	5,520	4,331	3,046
2003	2,956	4,516	7,328	7,778	2,366	4,216	4,647	1,680	2,854	809	18,003	3,959
2004	1,009	213	410	6,441	9,207	7,033	7,679	7,079	15,610	7,263	7,757	7,978
2005	58,975	54,494	32,002	29,198	7,572	13,114	8,338	7,426	8,650	32,056	17,400	23,090
2006	88,043	58,645	87,422	27,170	10,362	25,187	14,566	14,858	14,062	16,988	21,090	42,962
2007	42,275	43,065	50,655	26,029	19,232	34,199	19,594	18,444	44,216	50,445	69,054	103,349
2008	116,441	111,108	110,379	84,364	93,240	42,412	49,717	61,938	92,107	115,202	135,667	161,592
2009	144,814	141,464	199,385	170,347	154,135	150,398	149,786	156,446	157,894	176,646	211,224	215,277
2010	235,908	227,045	229,548	195,624	182,551	158,417	167,604	165,095	167,702	159,760	178,316	206,776
2011	207,480	182,596	199,874	167,657	161,457	155,080	169,400	175,518	162,626	182,738	191,751	218,428
2012	235,175	231,027	216,536	177,770	187,666	190,469						

	Anual
1994	0
1995	0
1996	6,284
1997	185,303
1998	116,405
1999	45,807
2000	30,327
2001	85,818
2002	48,819
2003	61,112
2004	77,680
2005	292,316
2006	421,355
2007	520,557
2008	1,174,168
2009	2,027,815
2010	2,274,345
2011	2,174,604
2012	1,238,642